

## Wanigas Whiskey

Rye or Bourbon (7 years old),  
per gallon \$4.00  
Panama whiskey, per gallon \$4.00  
Chateau whiskey, per gallon \$2.50  
Write or telephone us for prices on as-  
sorted case lots, wines, whiskies and  
brandy.

Send for price list, all goods guaranteed.  
**J. J. WALL**  
Wholesale Wine Merchant  
310 WEST SUPERIOR STREET  
Melrose 1435. Duluth, Minn. Grand 237.

## Let Us Repair Your Auto Radiator

We have been repairing auto radiators so  
long and so successfully that your friends  
know about our work if you do not.

All our work is guaranteed and we want  
to prove to you that there is none better in  
Duluth and that you need none better.

We also do all kinds of sheet metal work  
for automobile repairs or construction.

CALL US UP.

**Eastern Auto-Radiator Works**  
336 EAST SUPERIOR STREET.  
Phone: Grand 2323.

News Tribune Service.

## AUTOMOBILE OWNERS!

For Your Convenience a

## CUT RATE AUTOMOBILE ACCESSORY —STORE—

Will Open at

**216 East Superior St.  
ON MAY 1**

Having a Complete Line of Accessories  
—Tires and Parts for All Cars.

**Twin Ports Automobile Accessory Co.**  
S. Nides. Fred Daneiko.

Owing to special arrangements we  
can make deliveries on Franklin  
Cars at once.

**INTERSTATE AUTO CO.**

Melrose 4364. 206 East Superior Street. Grand 1347.

**REX  
BEER**

The  
Guide Post  
to  
Health  
Refreshing  
Nourishing  
Appetizing

**REX**

The Kingly Beer of  
Quality.

Always Satisfies.

**Duluth Brewing & Malting  
Co.**

Brewers and Bottlers of a Better Beer.

Have a  
Case  
Sent  
Home.

## DODGE BROTHERS MOTOR CAR

There have been no bursts of speed in the upbuilding of this  
great business.

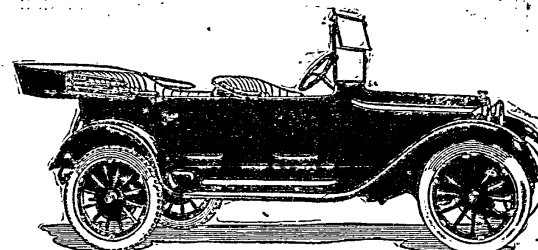
Both production and sales have been stable, steady and spon-  
taneous—scrupulous care in the one producing huge vol-  
ume in the other.

Although producing a large daily volume, Dodge Brothers  
are "losing business" by keeping production within the  
bounds of continuous betterment.

But over against this great loss is an infinitely greater gain—  
the implicit faith of the people in the integrity of Dodge  
Brothers' manufacturing methods.

The gasoline consumption is unusually low.  
The tire mileage is unusually high.

Touring Car or Roadster, \$785; Winter Touring Car or Roadster, \$930; Sedan, \$1155  
(All prices f. o. b. Detroit).

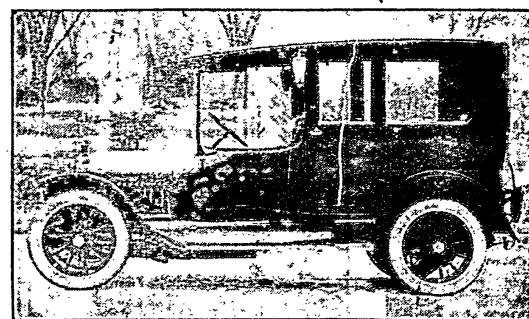


**E. H. WHITNEY MOTOR CO.**

RUSSELL S. SHERMAN, Manager

Duluth

Superior



## A FLEET OF WHITE TAXIS

We are now operating a fleet of five White Limou-  
sine Taxicabs at rates we are certain will please all.

SERVICE AT ALL HOURS

**The White Taxicab Co.**

ED. JOHNSON, Manager

TELEPHONES—Melrose 8300; Grand 191.